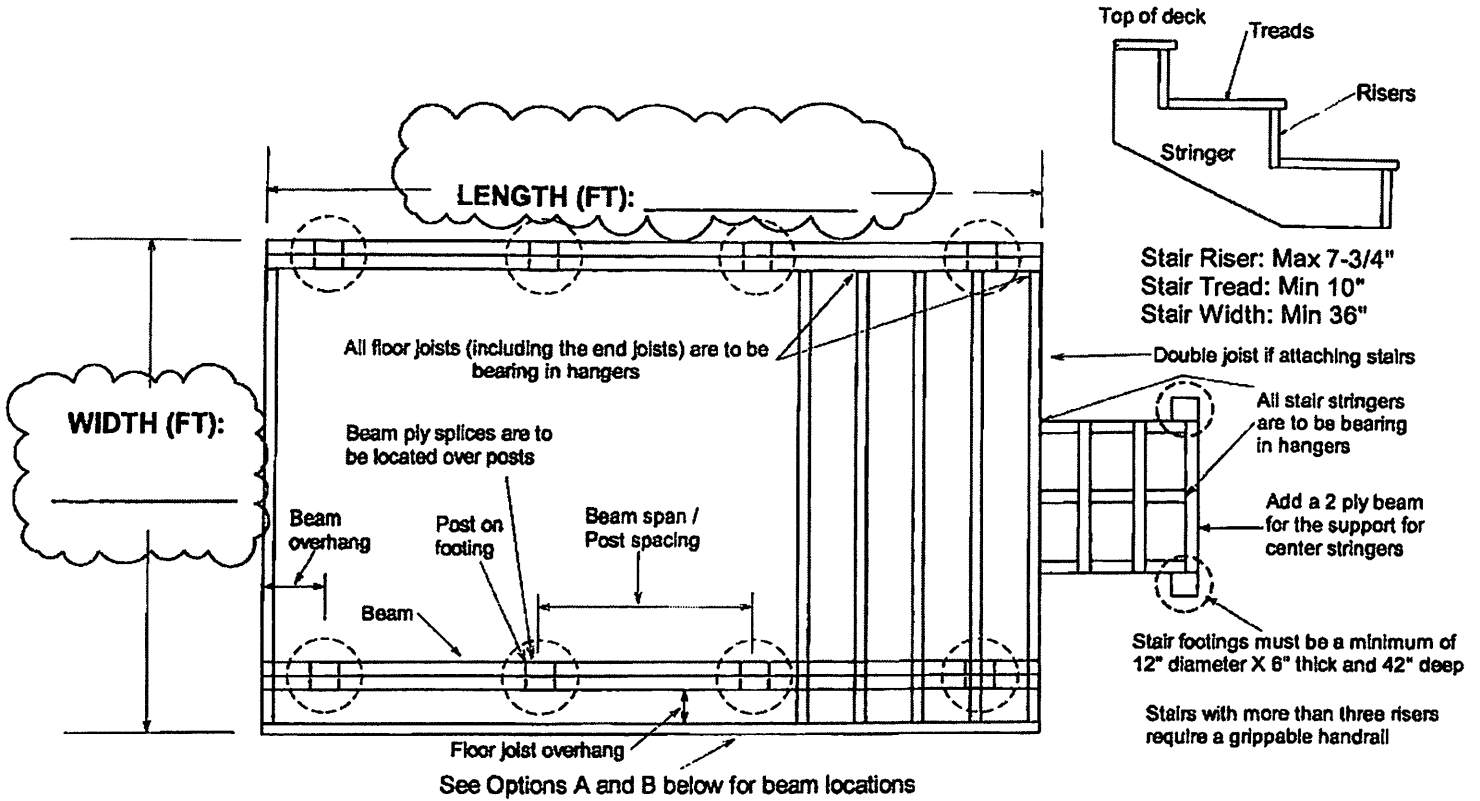


# FREESTANDING DECKS

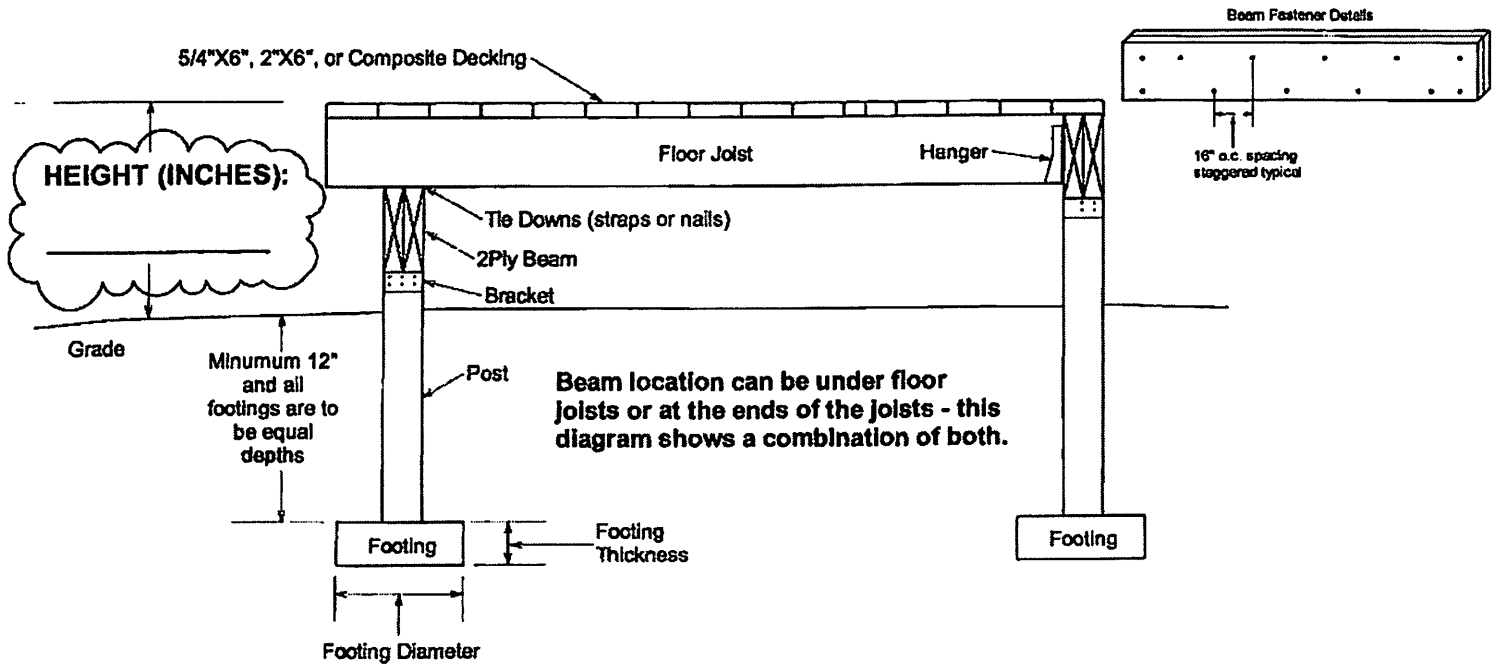
## OVERHEAD VIEW EXAMPLE

(Framing design may be slightly different than shown but built to the details on the following page)

\*\*Please fill in the Width, Length, and the Height of the deck\*\*



All fasteners, brackets, and hangers are to be rated for use with treated wood



**OPTION A**

**OPTION B**

See table on the second page for framing and footing details

## ALLOWABLE FRAMING DETAILS FOR FREESTANDING DECKS <sup>(b), (c)</sup>

Up to 600 sq.ft., max. 14 ft. wide, 30" or less from grade to the top of the decking, and do not include a roof or walls. The following information is intended as a simplified guide only and the details included meet or exceed the minimum code requirements.

Width of deck	Floor Joists Spaced max. 16" o.c.	Beam Using a max. cantilever of 1 ft. and max. post spacing of 6 ft.	Footings (round) With 4X4 post
4ft (and less)	Can use 2" x 6" joists with a maximum joist cantilever of 8in	2 ply 2" x 6"	12" Diameter x 6" Thick
6ft	Can use 2" x 6" joists with a maximum joist cantilever of 1ft	2 ply 2" x 8"	12" Diameter x 6" Thick
8ft	Can use 2" x 6" joists with a maximum joist cantilever of 1ft	2 ply 2" x 8"	12" Diameter x 6" Thick
10ft	Can use 2" x 8" joists with a maximum joist cantilever of 1ft 8in	2 ply 2" x 10"	14" Diameter x 6" Thick
12ft	Can use 2" x 10" joists with a maximum joist cantilever of 2ft	2 ply 2" x 10"	15" Diameter x 6" Thick
14ft	Can use 2" x 12" joists with a maximum joist cantilever of 2ft 4in	2 ply 2" x 12"	16" Diameter x 6" Thick

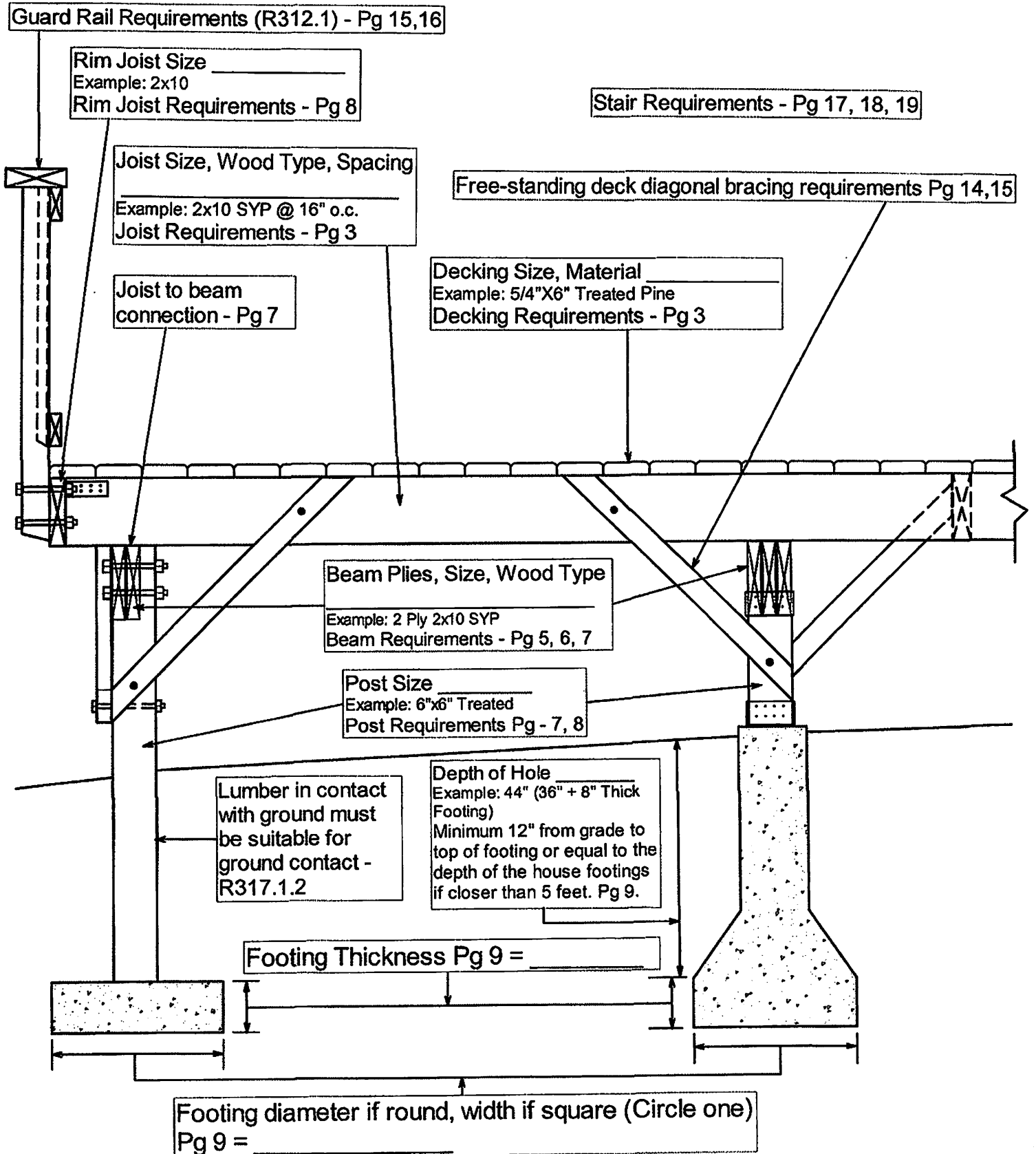
(a) 1/2" diameter (or equal) X 3-3/4" long lag screw with maximum 1/2" sheathing.

(b) Lumber is assumed to be S.P.F. (Spruce-Pine-Fir) Grade #2 or better.

(c) Details of this table are based on normal loading: Live Load (people load only)-40 lbs/sq ft, Dead Load (weight of framing)-10 lbs/sq ft, and 90 MPH winds. Decks supporting other loads such as air conditioners or hot tubs will require full plan review. Please consult staff.

# FREE-STANDING DECK CONSTRUCTION DETAILS

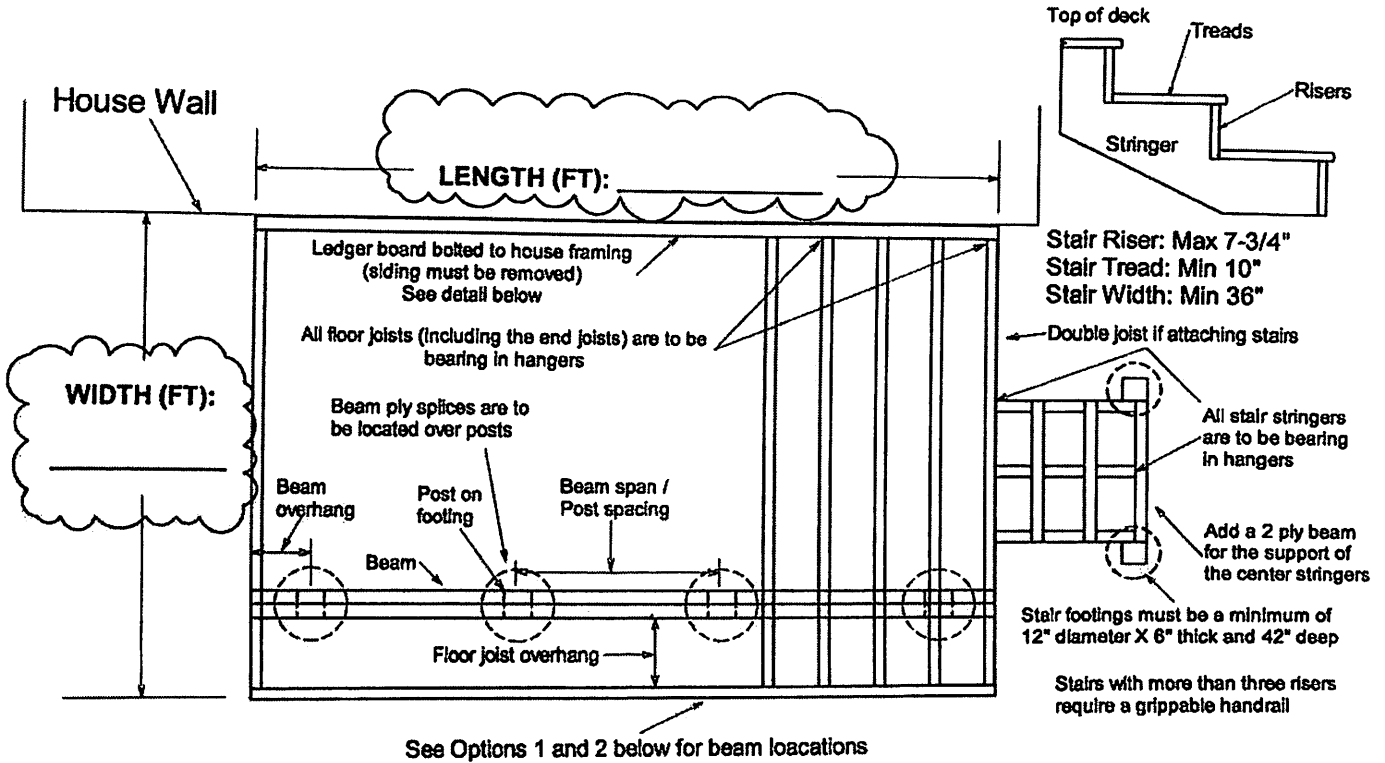
Page numbers refer to pages of the Deck Construction Guide



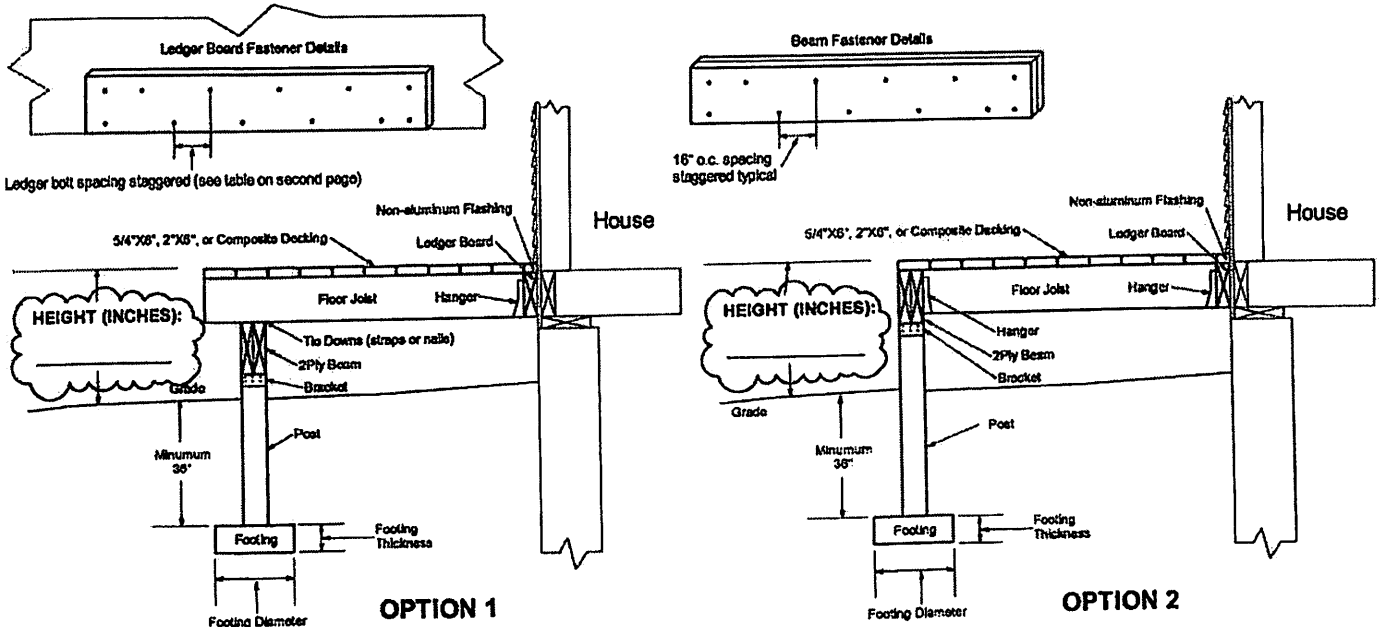
# DECKS ATTACHED TO A BUILDING

## OVERHEAD VIEW EXAMPLE

(Framing design may be slightly different than shown but built to the details on the following page)  
 \*\*Please fill in the Width, Length, and the Height of the deck\*\*



All fasteners, brackets, hangers, and flashing are to be rated for use with treated wood



See the table on the second page for framing and footing details

## ALLOWABLE FRAMING DETAILS FOR ATTACHED DECKS <sup>(b), (c)</sup>

Up to 600 sq.ft., max. 14 ft. wide, 30" or less from grade to the top of the decking, and do not include a roof or walls.

Decks cannot be supported by brick veneers, hollow core blocks, or cantilevered house framing.

The following information is intended as a simplified guide only and the details included meet or exceed the minimum code requirements.

Width of deck	Ledger board bolt spacing <sup>(a)</sup>	Floor Joists Spaced max. 16" o.c.	Beam Using a max. cantilever of 1 ft. and max. post spacing of 6 ft.	Footings (round) With 4X4 post
4ft (and less)	30" o.c. spacing staggered	Can use 2" x 6" joists with a 2" x 8" ledger board and maximum joist cantilever of 10in	2 ply 2" x 6"	12" Diameter x 6" Thick
6ft	30" o.c. spacing staggered	Can use 2" x 6" joists with a 2" x 8" ledger board and maximum joist cantilever of 1ft	2 ply 2" x 8"	12" Diameter x 6" Thick
8ft	23" o.c. spacing staggered	Can use 2" x 6" joists with a 2" x 8" ledger board and maximum joist cantilever of 1ft	2 ply 2" x 8"	12" Diameter x 6" Thick
10ft	18" o.c. spacing staggered	Can use 2" x 8" joists with a maximum joist cantilever of 2ft	2 ply 2" x 10"	14" Diameter x 6" Thick
12ft	15" o.c. spacing staggered	Can use 2" x 10" joists with a maximum joist cantilever of 2ft 4in	2 ply 2" x 10"	15" Diameter x 6" Thick
14ft	13" o.c. spacing staggered	Can use 2" x 12" joists with a maximum joist cantilever of 2ft 9in	2 ply 2" x 12"	16" Diameter x 6" Thick

(a) 1/2" diameter (or equal) X 3-3/4" long hex head lag screw with maximum 1/2" sheathing

(b) Lumber is assumed to be S.P.F. (Spruce-Pine-Fir) Grade #2 or better

(c) Details of this table are based on normal loading: Live Load (people load only)-40 lbs/sq ft, Dead Load (weight of framing)-10 lbs/sq ft, and 90 MPH winds. Decks supporting other loads such as air conditioners or hot tubs will require full plan review. Please consult staff.

# DECK CONSTRUCTION DETAILS

Page numbers refer to pages of the Deck Construction Guide

Stair Requirements - Pg 17, 18, 19

Framing details at cantilevered floors - Pg 19, 20

Guard Rail Requirements (R312.1) - Pg 15,16

Rim Joist Size \_\_\_\_\_  
Example: 2x10  
Rim Joist Requirements - Pg 8

Flashing Material \_\_\_\_\_  
Example: PVC  
Flashing Requirements - Pg 10, 11

Floor Joists  
Size, Wood Type, Spacing  
Example: 2x10 SYP @ 16" o.c.  
Joist Requirements - Pg 3

Ledger Board Size \_\_\_\_\_  
Example: 2X10  
Ledger Board Bolt & Spacing \_\_\_\_\_  
Example: 1/2"X4" @ 16" o.c. staggered  
Ledger Board Details Pg 10, 11, 12, 13

Joist Hanger Requirements - Pg 7

Joist to beam  
connection - Pg 7

Decking Size \_\_\_\_\_  
Example: 5/4"X6" Treated Pine  
Decking Requirements - Pg 3

Beam Plies, Size, Wood Type  
Example: 2 Ply 2x10 SYP  
Beam Requirements - Pg 5, 6, 7

Post Size \_\_\_\_\_  
Example: 6"x6" Treated  
Post Requirements Pg - 7, 8

Lumber in contact  
with ground must  
be suitable for  
ground contact -  
R317.1.2

Footing Thickness  
Pg 9 =

Depth of Hole \_\_\_\_\_  
Example: 44" (36" + 8" Thick  
Footing)  
Minimum 36" from grade to  
top of footing or equal to the  
depth of the house footings  
if closer than 5 feet. Pg 9.

Footing diameter if round, width if square (Circle one)  
Pg 9 =

